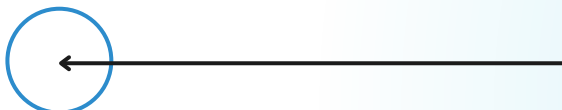


# PRODUCT CATALOGUE



# **PRODUCT CATALOGUE**

**Hyperbaric Chamber Soft Type**

**Hyperbaric Chamber Sitting Type**

**Hyperbaric Chamber Wheelchair Type**



**Hyperbaric Chamber Hard Type**

**Hyperbaric Chamber Sitting Hard Type**

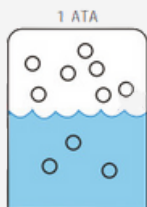
**Hyperbaric Chamber 2 Person Splicing Type**

# HYPERBARICKÁ KYSLÍKOVÁ TERAPIA

Hyperbaric Oxygen Therapy is the medical use of oxygen at an increased level of pressure.(hyper) means increased, (baric) means pressure. Hyperbaric Oxygen Therapy is a treatment which enhances the body's natural healing process by providing an environment which allows the body to absorb much higher amounts of oxygen than possible at normal atmospheric pressure. It increases the oxygen transport capacity in the blood. This noninvasive therapy is the most trusted way to increase oxygen levels to all organs of the body

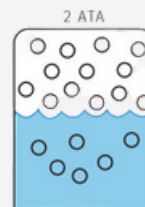
## Henry's Law:

„The amount of dissolved gas in a liquid is proportional to its partial pressure above the liquid.”



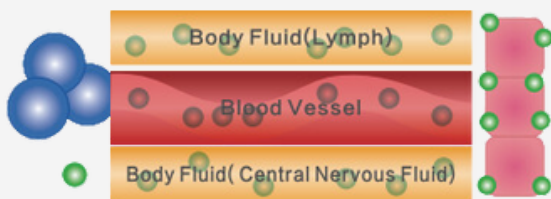
the state of gas dissolved in liquid at one ATA pressure

Circle: Gas



the state of gas dissolved in liquid at two ATA pressure

Blue: Liquid



Oxygen transport can be classified into "combined oxygen and dissolved oxygen" When entering blood, most oxygen will be combined with hemoglobin, then become combined oxygen. Therefore, combined oxygen is difficult to pass the narrow vascular wall, while dissolved oxygen is small and can greatly dissolved in blood and fluid under hyperbaric circumstances

# HYPERBARIC OXYGEN THERAPY

In hyperbaric oxygen therapy, we increase the oxygen concentration up to twenty times in the area of the smallest cells that need it the most, i.e. are damaged in some way.

Oxygen has to get into the vascular system, even though the blood vessels may be coated with different layers - atherosclerosis, diabetes, various nervous diseases - causing the blood vessels to thicken.

Therapy in a hyperbaric chamber is a simple, non-invasive and painless procedure.

## Where does hyperbaric therapy help?

- Autism, DMO, ADHD
- After vascular surgeries
- Osteoporosis
- Neurological disorders
- AIDS
- Diabetes
- Stroke
- Burns over 20% 2nd degree and more
- Severe ear infections
- Hearing impairment (sudden deafness, tinnitus)
- Interleukin II production.
- Gamma interferons
- Diabetic foot
- Biliary ulcer
- Depression
- Chronic fatigue
- Difficult to heal wounds
- Pre and post surgical conditions
- Lupus
- Psoriasis
- After orthopaedic surgeries

## Contraindications to hyperbaric therapy



Hyperbaric therapy is not suitable for patients with untreated pneumothorax. Therapy is also not recommended for patients with the following symptoms:

- Pulmonary emphysema with CO2 retention
- Bullae - air cysts on the lungs
- Condition after ear or chest surgery
- Acute viral infections with high fever
- Gravidity
- Claustrophobia
- Epilepsy

# HYPERBARIC CHAMBER SOFT TYPE



**MODEL: SB3/5 - 80  
/ SB3/5 - 90**

## Features

1.3 ATA (4psi) operating pressure

2 curved zipper seal for easier open and entrance

7 large transparent viewing windows to prevent claustrophobia

Cotton chamber protection cover, to avoid dirty and easy to wash

Most popular model for home treatment or commercial usage

Emergency valve - To speed the depressurization in emergency

Easy Operation - One people can operate it without assistance

Delivers 93% +/- 3% oxygen under pressure

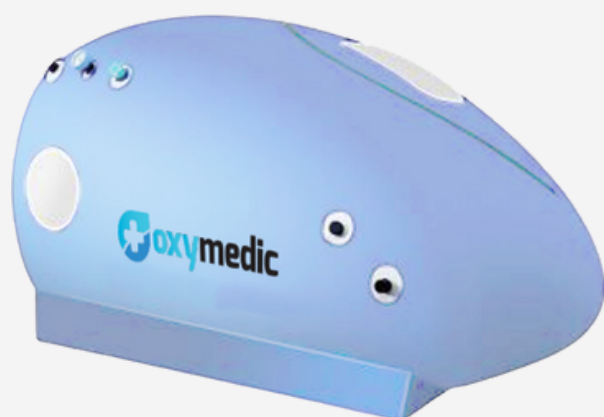
Internal pressure Gauge-User can observe the pressure while inside the chamber

Internal metal frame - Hold the shape when deflated

Ultra-quiet constant pressure valve.

Model		SB3.5. - 80	SB3.5. - 90
Chamber Capsule	Pressure	1.3ATA / 1.5ATA	1.3ATA / 1.5ATA
	Material	TPU	
	Size (D*L)	800x2320mm	900x2320mm
	Weight	13kg	13kg
Air Compressor	Size/Weight	440x240x310mm	
	Type	Quiet&Oil Free Type. Two Super adsorption activated carbon filters in air Input and Outlet to protect.PM≥2.5	
	Air Filter	Dual	
Oxygen Concentrator	Flow Rate	5Liter/min / 10Liter/min	
	Description	PSA Molecular Sieve High Technology. Continuous Oxygen production, no need for oxygen tank.	

# HYPERBARIC CHAMBER SITTING TYPE



**MODEL: SB3/4 - 2260  
/ SB3/4 - 1860**

Model		SB3/4-2260	SB3/4-1860
Chamber Capsule	Pressure	1.3 / 1.4ATA	1.3 / 1.4ATA)
	Material	TPU	
	Size (D*L)	L2300*W1000*H1200mm	L1800*W900*H1100mm
	Weight	46kg	36kg
Air Compressor	Size/Weight	440x240x310mm, 17kg	
	Type	Quiet&Oil Free Type. Two Super adsorption activated carbon filters in air Input and Outlet to protect.PM <sub>2.5</sub>	
	Air Filte	Dual	
Oxygen Concentrator	Flow Rate	5Liter/min / 10Liter/min	
	Description	PSA Molecular Sieve High Technology. Continuous Oxygen production, no need for oxygen tank.	

## Features

- 1.3 ATA (4psi) operating pressure
- 2 curved zipper seal for easier open and entrance
- 3 large transparent viewing windows to prevent claustrophobia
- Cotton chamber protection cover, to avoid dirty and easy to wash
- Most popular model for home treatment or commercial usage
- Emergency valve - To speed the depressurization in emergency
- Easy Operation - One people can operate it without assistance
- Delivers 93% +/- 3% oxygen under pressure
- Internal pressure Gauge-User can observe the pressure while inside the chamber
- Internal metal frame - Hold the shape when deflated
- Ultra-quiet constant pressure valve.

# HYPERBARIC CHAMBER WHEELCHAIR TYPE



**MODEL: SB3/4 - 1680**

## Features

1.3 ATA (4psi) operating pressure

2 C zipper seal for easier open and entrance

4 large transparent viewing windows to prevent claustrophobia

Cotton chamber protection cover, to avoid dirty and easy to wash

Most popular model for home treatment or commercial usage

Emergency valve - To speed the depressurization in emergency

Delivers 93% +/- 3% oxygen under pressure

Internal Pressure Gauge - User can observe the pressure while inside the chamber

Internal metal frame - Hold the shape when deflated

Ultra-quiet constant pressure valve

Model		SB3/4-1680
Chamber Capsule	Pressure	1.3 / 1.4ATA
	Material	TPU
	Size (D*L)	L1400*W1200*H1800mm
	Weight	38kg
All-in-one (AE 1931)	Size/Weight	L766*W350*H750cm
	Flow of Air	72 L/min
	Flow of Oxygen	5Liter/min / 10Liter/min
	Air Filter	Dual
	Cooler	Cooler system
	Voltage	110VAC/220VAC/±10%
	Description	All-in-one machine, a combination of air compressor, oxygenconcentrator, and cooler.

# HYPERBARIC CHAMBER HARD TYPE



**MODEL: HB50/100 - 1886**

Model	HB50/100-1886	
Chamber Capsule	Pressure	1.5 / 2ATA)
	Material	TPU
	Size (D*L)	850x2360mm
	Weight	262kg
All-in-one (AE 1931)	Size/Weight	L766*W350*H750cm, 110kg
	Flow of Air	72 Liter/min
	Flow of Oxygen	5Liter/min / 10Liter/min
	Air Filter	Dual
	Cooler	Cooler system
	Voltage	110VAC/220VAC/±10%
	Description	All-in-one machine, a combination of air compressor, oxygen concentrator, and cooler.

## Features

Slide type entry door, sealed by pressure, slow down system

86cm diameter optional

Interphone system for two-way communications.

Automatic air pressure control system

2 large windows on both sides

Delivers 93% +/- 3% oxygen under pressure

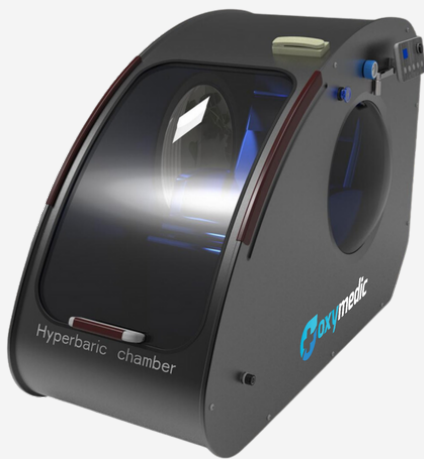
Easy installation and operation

Ultra-quiet constant pressure valve

Air compressor oxygen concentrator cooler all in one



# HYPERBARIC CHAMBER SITTING HARD TYPE



**MODEL: HB50/100 - 18200**

Model		HB50/100-18200
Chamber Capsule	Pressure	1.5 / 2ATA
	Material	Nerezová ocel' + technický plast PC
	Size	L2060*W870*H1520mm
	Weight	230kg
System Machine	Size/Weight	L766*W350*H750cm
	Flow of Air	80 Liter/min
	Prietok kyslíka	5Liter/min / 10Liter/min
	Flow of Oxygen	Dual
	Cooler	Cooler system
	Voltage	110VAC/220VAC/±10%
	Description	All-in-one machine, a combine of air compressor, oxygen concentrator, and cooler.

## Features

- Automatic disinfection and deodorization system
- Built-in multi-angle adjustable massage chair
- Inter and external system for two-way communications and control
- Automatic air pressure control system
- 2 large transparent viewing windows to prevent claustrophobia
- Delivers 93% +/- 3% oxygen under pressure
- USB charging, warm white light. Scrub and disinfect upholstery
- Ultra-quiet constant pressure valve
- Air compressor oxygen concentrator cooler all in one

# HYPERBARIC CHAMBER

## 2 PERSON SPLICING TYPE



**MODEL: HB50/100 - 18180**

### Features

Automatic disinfection and deodorization system

Built-in multi-angle adjustable massage chair

Inter and external system for two-way communications and control

Automatic air pressure control system

4 large transparent viewing windows to prevent claustrophobia

Delivers 93% +/- 3% oxygen under pressure

USB charging, warm white light. Scrub and disinfect upholstery

Ultra-quiet constant pressure valve

Air compressor oxygen concentrator cooler all in one

Model		HB50/100-18180
Chamber Capsule	Pressure	1.5 / 2ATA
	Material	Nerezová ocel' + technický plast PC
	Size	2200*1500*1650MM
	Weight	260kg
System Machine	Size/Weight	L766*W350*H750cm
	Flow of Air	110 Liter/min
	Flow of Oxygen	10Liter/min
	Air Filter	Dual
	Cooler	Cooler system
	Voltage	110VAC/220VAC/±10%
	Description	All-in-one machine, a combine of air compressor, oxygen concentrator, and cooler

# FAQ

## **? What is a hyperbaric chamber?**

An HBO chamber is a device in which medical oxygen is inhaled at elevated atmospheric pressure. This makes the oxygen soluble in the blood plasma and thus reaches the fluids in the interstitial spaces. In this way, it can also directly enter those cells in the body that normally suffer from a lack of oxygen. The functions of these cells are thus gradually restored. It is adapted to the stay of persons under conditions of increased air pressure and medical oxygen inflow of 95% +/-3%, 10L/min.

Oxygen reaches places that are insufficiently supplied with blood. In chronic diseases, wounds that are difficult to heal, nervous disorders, poisoning, strokes or diabetic foot, improvement can be achieved by regenerating the thin blood vessels - capillaries in the area of the damaged site. However, we need a lot of energy and oxygen to do this. Oxygen is the main source of energy production in every cell of the human body and we can get it into the body in large quantities. In this way, we speed up the healing process of damaged tissues.

## **? What happens during hyperbaric therapy?**

In HBO therapy, we increase the oxygen concentration up to twenty times in the area of the smallest cells that need it the most, i.e. are damaged in some way.

Oxygen has to get into the vascular system, even though the blood vessels may be coated with different layers - atherosclerosis, diabetes, various nervous diseases - cause the blood vessels to thicken. Therapy in a hyperbaric oxygen chamber is a simple, non-invasive and painless procedure.

## **? What do you feel in the hyperbaric chamber?**

With compression - pressing the ventricle, we can feel a pinching in the ears, a slight pain, which is quite normal. We compensate the pressure by swallowing, yawning, or sucking on a piece of candy. When the necessary pressure is reached, these symptoms disappear.



---

RIMAVSKÁ SOBOTA  
Malohontská 2594  
+421 907 663 257  
info@oxymedic.sk  
oxymedic.sk