

PRODUCT CATALOGUE





PRODUCT CATALOGUE

Hyperbaric Chamber Lying Type

Hyperbaric Chamber Sitting Type

Hyperbaric Chamber Wheelchair Type

Hyperbaric Chamber Sitting Type

Hyperbaric Chamber Hard type



Large Hyperbaric Chamber Hard type

Fixed vertical multi-person chamber

Fixed sliding hyperbaric oxygen chamber

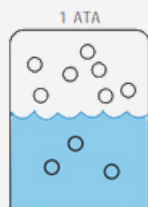
Hyperbaric Chamber Veterinary Type

HYPERBARIC OXYGEN THERAPY

Hyperbaric Oxygen Therapy is the medical use of oxygen at an increased level of pressure, (hyper) means increased, (baric) means pressure. Hyperbaric Oxygen Therapy is a treatment which enhances the body's natural healing process by providing an environment which allows the body to absorb much higher amounts of oxygen than possible at normal atmospheric pressure. It increases the oxygen transport capacity in the blood. This noninvasive therapy is the most trusted way to increase oxygen levels to all organs of the body

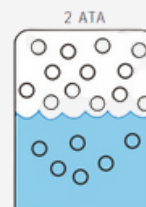
Henry's Law:

„The amount of dissolved gas in a liquid is proportional to its partial pressure above the liquid.“



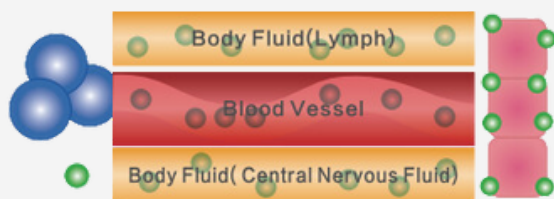
the state of gas dissolved in liquid at one ATA pressure.

Circle: Gas



the state of gas dissolved in liquid at two ATA pressure

Blue: Liquid



Oxygen transport can be classified into "combined oxygen and dissolved oxygen" When entering blood, most oxygen will be combined with hemoglobin, then become combined oxygen. Therefore, combined oxygen is difficult to pass the narrow vascular wall, while dissolved oxygen is small and can greatly dissolved in blood and fluid under hyperbaric circumstances

HYPERBARIC OXYGEN THERAPY

In hyperbaric oxygen therapy, we increase the oxygen concentration up to twenty times in the area of the smallest cells that need it the most, i.e. are damaged in some way.

Oxygen has to get into the vascular system, even though the blood vessels may be coated with different layers - atherosclerosis, diabetes, various nervous diseases - causing the blood vessels to thicken.

Therapy in a hyperbaric chamber is a simple, non-invasive and painless procedure.

Where does hyperbaric therapy help?

- Autism, DMO, ADHD
- After vascular surgeries
- Osteoporosis
- Neurological disorders
- AIDS
- Diabetes
- Stroke
- Burns over 20% 2nd degree and more
- Severe ear infections
- Hearing impairment (sudden deafness, tinnitus)
- Interleukin II production.
- Gamma interferons
- Diabetic foot
- Biliary ulcer
- Depression
- Chronic fatigue
- Difficult to heal wounds
- Pre and post surgical conditions
- Lupus
- Psoriasis
- After orthopaedic surgeries

Contraindications to hyperbaric therapy



Hyperbaric therapy is not suitable for patients with untreated pneumothorax. Therapy is also not recommended for patients with the following symptoms:

- Pulmonary emphysema with CO2 retention
- Bullae - air cysts on the lungs
- Condition after ear or chest surgery
- Acute viral infections with high fever
- Gravidity
- Claustrophobia
- Epilepsy

HYPERBARIC CHAMBER LYING TYPE



**MODEL: SM30 - 801
SM30 - 901**



MAX: 1.3 ATA

Model		SM30 - 801	SM30 - 901
Chamber Capsule	Pressure	1.3ATA	
	Material	TPU	
	Size (D*L)	80x225cm (32x89 inch)	90x225cm (36x89 inch)
	Weight	13kg	16kg
Air Compressor	Size	39x24x26cm (16x10x11 inch)	
	Type	Quite&Oil Free Type. Two super adsorption activated carbon filters in air input and outlet to protect	
Oxygen Concentrator	Size	35x32x57cm (14x13x23 inch)	
	Flow rate	5Liter/min / 10Liter/min	
	Description	PSA Molecular Sieve High Technology. Continuous Oxygen production, no need for oxygen tank	
Air Cooler	Size	18x12x35cm (7.2x5x14 inch)	
	Description	Cooling and dehumidification	

Features

- 1.3 ATA operating pressure
- 2 zipper seal for easier entrance
- 7 large transparent viewing windows to prevent claustrophobia
- Cotton chamber protection cover, to avoid dirty and easy to wash
- Most popular model for home treatment or commercial usage
- Emergency valve - To speed the depressurization in emergency
- Easy operation - One person can operate it without assistance
- Delivers 93% +/- 3% oxygen under pressure
- Internal Pressure Gauge - user can observe the pressure while inside the chamber
- Internal metal frame - Hold the shape when deflated

HYPERBARIC CHAMBER LYING TYPE

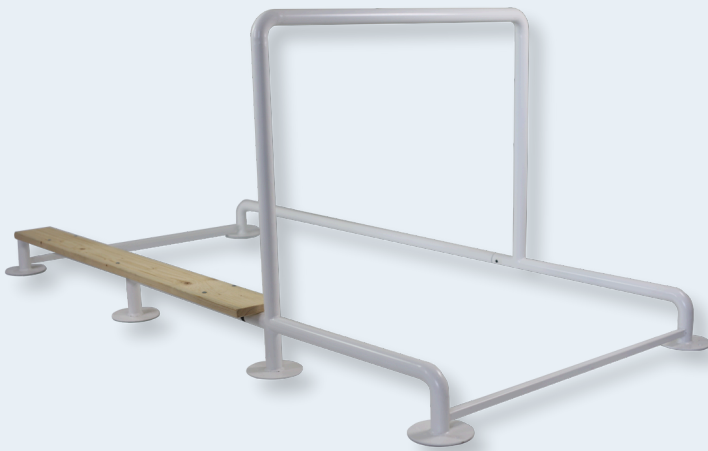


**MODEL: SM30 - 801
SM30 - 901**



MAX: 1.3 ATA

HANDRAIL TO THE CHAMBER

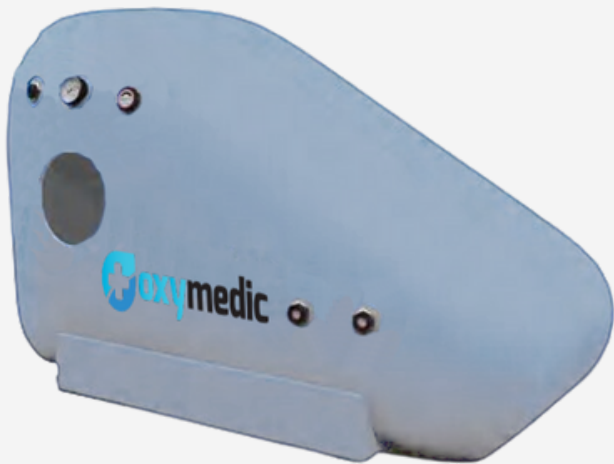


Dimensions:

115 cm width

240 cm length

HYPERBARIC CHAMBER SITTING TYPE



MODEL:SM30 - 1700



MAX: 1.3 ATA

Model	SM30 - 1700	
Chamber Capsule	Pressure	1.3ATA
	Material	TPU
	Size (D*L)	170x70x110cm (67x28x43 inch)
	Weight	13kg
	Type	Sitting/Semi-Lying
Air Compressor	Size	39x24x26cm (16x10x11 inch)
	Type	Quiet&Oil Free Type. Two super adsorption activated carbon filters in air input and outlet to protect
Oxygen Concentrator	Size	35x32x57cm (14x13x23 inch)
	Description	PSA Molecular Sieve High Technology. Continuous Oxygen production, no need for oxygen tank
	Flow Rate	5Liter/min / 10Liter/min
Air Cooler	Size	18x12x35cm (7.2x5x14 inch)
	Description	Cooling and dehumidification

Features

1.3 ATA operating pressure

Fully covered with nylon cover -unique 3 zipper seal for leak prevention

Designed to add a folding chair (adjustable height) for ultimate comfort

Emergency valve - To speed the depressurization in emergency

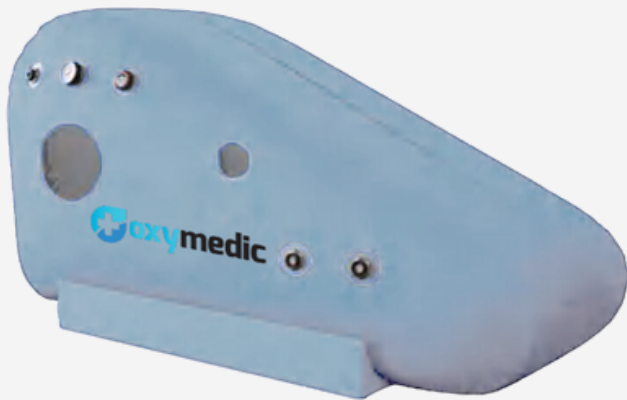
Easy operation - One person can operate it without assistance

Internal Pressure Gauge - user can observe the pressure while inside the chamber

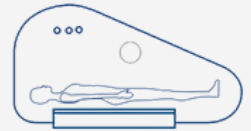
Internal metal frame - Hold the shape when deflated

Delivers 93% +/- 3% oxygen under pressure

HYPERBARIC CHAMBER SITTING TYPE



MODEL:SM30 - 2200



Features

1.3 ATA operating pressure

Fully covered with nylon cover -unique 3 zipper seal for leak prevention

Designed to add a folding chair (adjustable height) for ultimate comfort

Extended size sitting chamber, one can both lay down and sit down

Easy operation - One person can operate it without assistance

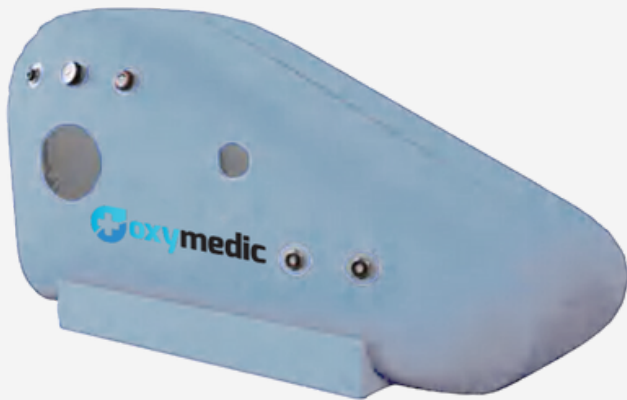
Internal metal frame - Hold the shape when deflated

Delivers 93% +/- 3% oxygen under pressure

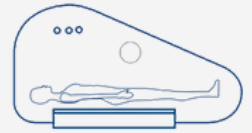
Internal Pressure Gauge - user can observe the pressure while inside the chamber

Model	SM30 - 2200	
Chamber Capsule	Pressure	1.3ATA
	Material	TPU
	Size (D*L)	220x70x110cm(89x28x43 inch)
	Weight	14kg
	Type	Sitting/Lying
Air Compressor	Size	39x24x26cm (16x10x11 inch)
	Type	Quiet&Oil Free Type. Two super adsorption activated carbon filters in air input and outlet to protect
Oxygen Concentrator	Size	35x32x27cm (14x13x23 inch)
	Description	PSA Molecular Sieve High Technology. Continuous Oxygen production, no need for oxygen tank
	Flow Rate	5Liter/min / 10Liter/min
Air Cooler	Size	18x12x35cm (7.2x5x14 inch)
	Description	Cooling and dehumidification

HYPERBARIC CHAMBER SITTING TYPE



MODEL:SM30 - 2200



HANDRAIL TO THE CHAMBER



Dimensions:

120 cm width

255 cm length

HYPERBARIC CHAMBER WHEELCHAIR TYPE



Photo illustration

MODEL: SM30 - 4000

MAX: 1.3 ATA

Model	SM30 - 4000	
Chamber Capsule	Pressure	1.3ATA
	Material	TPU
	Size (D*L)	140x130x175cm (56x52x70 inch)
	Weight	14kg
	Type	Sitting
Air Compressor	Size	39x24x26cm (16x10x11 inch)
	Type	Quiet&Oil Free Type. Two super adsorption activated carbon filters in air input and outlet to protect
Oxygen Concentrator	Size	35x32x27cm (14x13x23 inch)
	Description	PSA Molecular Sieve High Technology. Continuous Oxygen production, no need for oxygen tank
	Flow Rate	5Liter/min / 10Liter/min
Air Cooler	Size	18x12x35cm (7.2x5x14 inch)
	Description	Cooling and dehumidification
Folding Chair (optional)	Description	Durable and elastic. Can sit or semi-lying inside the chamber. Weight: 9kg

Features

1.3 ATA mild operating pressure

Fully covered with nylon cover -unique 3 zipper seal for leak prevention

Designed to accommodate 2 folding chairs with comfortable space

Emergency valve - To speed the depressurization in emergency

Available "u" type door and "n" type for your choice

Delivers 93% +/- 3% oxygen under pressure

Wheelchair accessible, designed for people with limited mobility

HYPERBARIC CHAMBER SITTING TYPE



MODEL:SM30 - L1

Features

1.3 ATA operating pressure

"L" shaped zipper for easier entrance

Vertical design - small footprint

Most economical model for home treatment or commercial usage

Emergency valve - To speed the depressurization in emergency

Delivers 93% +/- 3% oxygen under pressure

Internal Pressure Gauge - user can observe the pressure while inside the chamber

Internal metal frame - Hold the shape when deflated

Model		L1
Chamber Capsule	Pressure	1.3ATA
	Material	TPU
	Size (D*L)	140x100x160cm (56x40x64 inch)
	Weight	13kg
Air Compressor	Size	39x24x26cm (16x10x11 inch)
	Type	Quiet&Oil Free Type. Two super adsorption activated carbon filters in air input and outlet to protect
Oxygen Concentrator	Size	35x32x57cm (14x13x23 inch)
	Description	PSA Molecular Sieve High Technology. Continuous Oxygen production, no need for oxygen tank
	Flow Rate	5Liter/min / 10Liter/min
Air Cooler	Size	18x12x35cm (7.2x5x14 inch)
	Description	Cooling and dehumidification

HYPERBARIC CHAMBER HARD TYPE



MODEL: HM50 - 1501

Model		HM50 - 1501
Chamber Cabin	Pressure	1.5ATA
	Material	Stainless steel + Polycarbonate
	Size (D*L)	90x220cm (36x87 inch)
	Weight	170kg
System Machine	Size/Weight	77x46x72cm (30x17x28 inch)
	Flow of Air	72 Liter/min
	Flow of Oxygen	5Liter/min / 10Liter/min
	Air Filter	Dual
	Voltage	110VAC/220VAC \pm 10%
	Description	All-in-one machine, a combine of air compressor, oxygen concentrator, and cooler

Features

1.5ATA operating pressure

90cm diameter optional

Interphone system for two-way communications

Pneumatic control system, unique sliding door secure locking mechanism for convenient door opening and closing

Wide and convenient transparent viewing window

Delivers 93% +/- 3% oxygen under pressure

Control system combines of air compressor, oxygen concentrator and cooling unit

LARGE HYPERBARIC CHAMBER HARD TYPE

MODEL: HM 50/100-5000



Model		HM 50/100-5000
Chamber Cabin	Pressure	1.5ATA
	Material	Stainless steel + polycarbonate
	Size	207x175x165cm
	Weight	400 kg
Aerodynamic systém	Size	20x50x60 cm
	Weight	85 kg
	Voltage	220 V 50 HZ 1300 W
	Material	Stainless steel
	Noise	≤ 60 dB
	Description	All-in-one machine, a combine of air compressor, oxygen concentrator, and cooler

Features

1.5ATA operating pressure

Designed for several people (up to 5)

Integrated molding cabin

Installed TV and other audio equipment in the cabin

Internal control system

Indoor air conditioning

Pneumatic control system, unique safe and convenient door opening and closing

Low, medium and high air pressure switches

Automatic device for increasing pressure and decompression

FIXED VERTICAL MULTI-PERSON CHAMBER



MODEL: HE 50/100-5000S

Further information:

The water-cooled air conditioner can be relocated at any time with good cooling effect.

Designed for multiple persons (1 to 2)

One set of internal and external telephone intercom

Internal control system

Internal air conditioning

Design with noise reduction inside and outside the chamber, better experience.

Round stainless steel chamber structure created with high-tech technology is balanced and strong under pressure.

Easy to install and operate.

Model		HE 50/100-5000S
Chamber Cabin	Pressure	1.5 - 2.0 ATA (7/14Psi)
	Material	Stainless steel
	Dimensions	100x220x180cm
	Color	white
	Weight	380kg
Technical parameters	Voltage	110/220/240 VAC ±10%
	Operating pressure	50kpa~100kPa(1.5ATA~2.0ATA) ±3
	Pressure flow	140L/min±5
	Chamber noise	≤65db
	Speed increase	15 min (1.5ATA)
	Description	An all-in-one device, a combination of air compressor, oxygen concentrator and cooler.

FIXED SLIDING HYPERBARIC OXYGEN CHAMBER



MODEL: HM750A

Model		HM750A
Chamber Cabin	Pressure	1.8 ATA/12psi
	Material	Stainless steel
	Dimensions	2361 x 889 x 1431.5 mm
	Color	white
	Weight	200kg
Technical parameters	Pressure medium	Air
	Air flow	72 Liter/min \pm 5
	Operating pressure	80KPa (1.8ATA) \pm 3
	Chamber noise	\leq 62db
	Voltage	110 60Hz/220V 50Hz
	Description	An all-in-one device, a combination of air compressor, oxygen concentrator and cooler.

Accessories:

Silencer

LED light bar

One stainless steel plate

Internal control panel set

External pressure gauge 0-100 (KPA) 1 pc

Transmitter 1 pc

Main switchboard 1 set

External control panel 1 set

One set of first aid stretcher

1 alarm

Automatic relief valve 2pcs

Windows 4pcs

HYPERBARIC CHAMBER VETERINARY TYPE



MODEL: HMA700 - 70 (50)

Model		HMA700 - 70 (50)
Chamber Cabin	Pressure	1.5ATA(7psi)
	Material	Stainless steel + PC
	Size (D*L)	142x71x93cm(57x28x37 inch)
	Cabin diameter	70cm
	Weight	100kg
System Machine	Size/Weight	77x46x72cm (30x18x28 inch),70kg
	Flow of Air	72 Liter/min
	Flow of Oxygen	5Liter/min / 10Liter/min
	Air Filter	Dual
	Voltage	110VAC/220VAC ± 10%
	Description	All-in-one machine, a combine of air compressor, oxygen concentrator, and cooler

Application Fields

Gastric dilation and volvulus and the associated injuries

Fracture repair, especially open fractures or those involving malunion or nonunion

Gastrointestinal resection and anastomosis, especially post-foreign bodyobstruction

Amputations

Skin grafts

Hemilaminectomy

Ear canal ablation

FAQ

? What is a hyperbaric chamber?

An HBO chamber is a device in which medical oxygen is inhaled at elevated atmospheric pressure. This makes the oxygen soluble in the blood plasma and thus reaches the fluids in the interstitial spaces. In this way, it can also directly enter those cells in the body that normally suffer from a lack of oxygen. The functions of these cells are thus gradually restored. It is adapted to the stay of persons under conditions of increased air pressure and medical oxygen inflow of 95% +/-3%, 10L/min.

Oxygen reaches places that are insufficiently supplied with blood. In chronic diseases, wounds that are difficult to heal, nervous disorders, poisoning, strokes or diabetic feet, improvement can be achieved by regenerating the thin blood vessels - capillaries in the area of the damaged site. However, we need a lot of energy and oxygen to do this. Oxygen is the main source of energy production in every cell of the human body and we can get it into the body in large quantities. In this way, we speed up the healing process of damaged tissues.

? What happens during hyperbaric therapy?

In HBO therapy, we increase the oxygen concentration up to twenty times in the area of the smallest cells that need it the most, i.e. are damaged in some way.

Oxygen has to get into the vascular system, even though the blood vessels may be coated with different layers - atherosclerosis, diabetes, various nervous diseases - cause the blood vessels to thicken. Therapy in a hyperbaric oxygen chamber is a simple, non-invasive and painless procedure.

? What do you feel in the hyperbaric chamber?

With compression - pressing the ventricle, we can feel a pinching in the ears, a slight pain, which is quite normal. We compensate the pressure by swallowing, yawning, or sucking on a piece of candy. When the necessary pressure is reached, these symptoms disappear.





RIMAVSKÁ SOBOTA
Malohontská 2594
+421 907 663 257
info@oxymedic.sk
oxymedic.sk